

## Weekly newsletter



Friday 19<sup>th</sup>  
May 2017



### Going for Gold Assembly

Awards for the week ending 19<sup>th</sup> May

#### Pupil of the week:

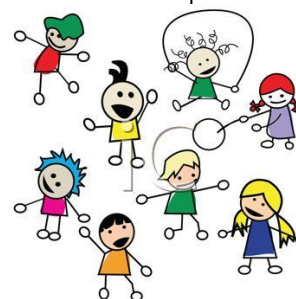
Reception	Oliver Hodgson	Year 1	Stephen Rigby
Year 2	Tia Quigley	Year 3	Jorja Percival
Year 4	Alexie Owen	Year 5	Mckenzie Rihia
Year 6	Shaun Fairhurst		

#### Attendance Award

Year 6

#### Playground Awards

KS1 Indoor	Declan Boon	KS2 Indoor	Elise Ip
KS1 Outdoor	Hannah McMillan	KS2 Outdoor	Aimee Marron



Well done everyone

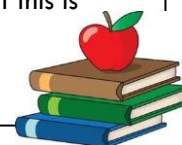
### Y6 Hinning House 2017

A few reminders if your child is going on the outdoor education week in July 2017:

- please return the completed medical form asap (if you have misplaced the original please ask at the office for another one)
- the parent's meeting is at 3.30pm on Monday 5<sup>th</sup> June 2017
- any outstanding balance must be paid by Friday 26<sup>th</sup> May 2017, if you are unsure how much you owe please contact the office

### Open Morning

On Friday 26<sup>th</sup> May 2017, we will be holding our termly Open Morning for parents between 9.00-10.00am. You are very welcome to visit your child's classroom during this time to look at their books and some of the work displayed around the room. The staff will also be available for an informal chat. I appreciate that you have to wait after dropping your child off for the doors to reopen but this is allow us to take registers, order dinners and ensure all normal day to day routines are completed.



### Lowton & Golborne Schools (LOGOS) Art Exhibition

Over the past few weeks, our Y5 children have been working on an art project entitled "Celebration" which will be displayed at the above exhibition at Leigh Sixth Form College, Sale Way, Leigh. The exhibition opens on Monday 12<sup>th</sup> June for the Y5 children and their parents and will be open to the general public from Wednesday 14<sup>th</sup> June until Friday 16<sup>th</sup> June. We are sure that the event will be a great success and would like to thank all our children, Mrs Fitzroy and Miss Henry for all their hard work. Please go along and have a look at our fantastic work.



shutterstock\_29039295

### Contact and Medical Details

We know people change their mobile phones and therefore numbers regularly but it is really important that school is able to contact you in an emergency. Please keep us up to date with all your contact names and number.

Also if your child is diagnosed with an illness or has a condition you are not sure we are aware of please contact the school office. The safety and health of all our children is of the utmost importance to us.



### Bikes and Scooters

Please can I remind everyone that bikes and scooters **must not** be ridden on the school grounds. Children (including younger siblings) and adults are very welcome to come to school on these but must dismount at the top of the main path to school and push them to the racks. **Thank you for your support.**

### Lost Property

We have the following unnamed items in lost property, which will be recycled if they are not claimed by Friday 26<sup>th</sup> May.



- 1 x girl's Dora the Explorer umbrella
- 1 x girl's Right to Fright umbrella
- 1 x navy blue boys padded coat age 9/10
- 1 x grey hoodie nutmeg age 10/11
- 1 x burgundy/navy hooded jacket age 9/10
- 1 x royal blue H&M fleece cardigan
- 1 x blue Umbro hoodie age 7/8
- 1 x dark grey Carbrini hoodie age 10/12
- 1 x black girl's George hoodie age 12/13



We also have an assortment of hats, scarves, gloves plus some odd gloves too, which are all in good condition so please can you check and call into the school office if you think they may belong to your child.

**Thank you.**

At Lowton J & I we aim for all children to have 96% attendance or over.

The school's overall attendances for each year group are:

Year Group	Last Week	Yearly Attendance to Date
Reception	97.67%	96.72%
Year 1	93.21%	95.31%
Year 2	95.16%	96.26%
Year 3	98.33%	96.45%
Year 4	98.28%	96.04%
Year 5	97.93%	95.52%
Year 6	100.00%	96.83%

### Dates for your diary

Monday 22 <sup>nd</sup> May	Y5 at LOGOS Dance off
Wednesday 24 <sup>th</sup> May	Shape, space and desperate measures performances for children
Friday 26 <sup>th</sup> May	School Council Charity Day
Friday 26 <sup>th</sup> May	Parents Open morning 9.00am – 10.00am
Friday 26 <sup>th</sup> May	School closes for May half-term holiday
Monday 5 <sup>th</sup> June	School reopens after May half-term holiday
Monday 5 <sup>th</sup> June	Y6 Hinning House trip – Parents' meeting at 3.30pm
Tuesday 6 <sup>th</sup> June	Wigan Warriors in school
Tuesday 6 <sup>th</sup> June	New Starters meeting at 5.30pm
Thursday 8 <sup>th</sup> June	School closed – General Election
Friday 9 <sup>th</sup> June	Music Alive performance for whole school
Monday 12 <sup>th</sup> – Friday 16 <sup>th</sup> June	LOGOS Art Exhibition at Leigh College
Monday 12 <sup>th</sup> – Friday 16 <sup>th</sup> June	Phonics testing week for Y1s
Tuesday 13 <sup>th</sup> June	Y4 visit to Synagogue
Thursday 15 <sup>th</sup> June	Y6 Transition day at LHS
Friday 16 <sup>th</sup> June	Inspire 1
Friday 16 <sup>th</sup> June	Wear you own clothes day – PTFA Rainbow Tombola donations
Monday 19 <sup>th</sup> June	Year 6 photographs
Friday 23 <sup>rd</sup> June	Inspire 2
Saturday 24 <sup>th</sup> June	PTFA Summer Fair 12-3pm



More information will be available on the school website ([www.lowtonprimary.wigan.sch.uk](http://www.lowtonprimary.wigan.sch.uk)) and in future newsletters regarding school activities.

**Headteacher – Mrs A J Davies**

**Website address:- [www.lowtonprimary.wigan.sch.uk](http://www.lowtonprimary.wigan.sch.uk)**