

Weekly
newsletter



Friday 26th
May 2017



Have a lovely half-term holiday



Going for Gold Assembly

Awards for the week ending 26th May

Pupil of the week:

Reception	Ava Ramsdale	Year 1	Ava Pilkington
Year 2	Kobi'jace Heywood-Harris	Year 3	Alissa Collier
Year 4	Bradley Eckersley	Year 5	Aimee Marron
Year 6	Callum Toolan		

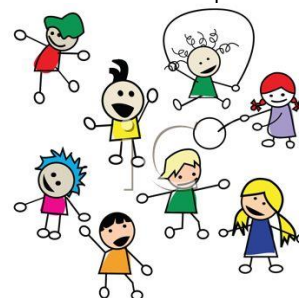
Attendance Award

Year 6

Playground Awards

KS1 Indoor	Harley Topping	KS2 Indoor	Gaea Miller
KS1 Outdoor	Bradley Moister	KS2 Outdoor	Thomas Leung

Well done everyone



Lowton J & I Times tables Challenge

A good week in Mrs Davies' challenge. Well done to everyone below on earning their wristbands. Also a big well done to everyone who tried, keep up the practise.

3s & 4s

Alex Thomson

6s & 7s

Lucy Danson
Callum Pearson

8s & 9s

Jayden Litherland

11s & 12s

Liberty Collier

Lewis Hooton

Alicia Wallace



Sponsored Bounce

Please can you send any outstanding sponsor money into school as soon as possible after the half term holiday. We will then be able to tell you the total raised. Thank you

Sports Day

Our postponed sports day will now be held on the afternoon of Tuesday 20th June starting at 1.15pm – weather permitting of course ☺



Dogs on school grounds

Please can we remind you that dogs are not allowed on the school grounds except for guide dogs. Thank you for your support with this.

Breakfast Club

Just a reminder that the cost of Breakfast Club is increasing to £1.50 per day from Monday 5th June 2017. Thank you.



Open Morning

Thank you to everyone who came to our Open Morning, it was the best turnout ever. I hope you all found it useful to see your child's books, work and visit their classrooms.





Lowton & Golborne Schools (LOGOS) Art Exhibition

Over the past few weeks, our Y5 children have been working on an art project entitled "Celebration" which will be displayed at the above exhibition at Leigh Sixth Form College, Sale Way, Leigh. The exhibition opens on Monday 12th June for the Y5 children and their parents and will be open to the public from Wednesday 14th June until Friday 16th June. We are sure that the event will be a great success and would like to thank all our children, Mrs Fitzroy and Miss Henry for all their hard work. Please go along and have a look at our fantastic work.

REMINDER

School will be closed to pupils on Thursday 8th June due to the building being used as a Polling Station for the General Election. School will reopen as usual on Friday 9th June.



Golborne High School Family Fun Day

Golborne High School are having a Family Fun Day on Saturday 7th July at 12 noon. There will be lots of activities and stalls plus the chance to explore the wetland area.

Charity Day

The school Council raised a magnificent £200 for Dementia UK. The KS2 children took part in an assembly with the charity and proved to be very knowledgeable about this dreadful condition, which is affecting so many of our families. Thank you for your support.

At Lowton J & I we aim for all children to have 96% attendance or over.

The school's overall attendances for each year group are:

Year Group	Last Week	Yearly Attendance to Date
Reception	92.06%	96.46%
Year 1	94.64%	95.39%
Year 2	93.87%	95.95%
Year 3	93.33%	96.37%
Year 4	95.17%	95.95%
Year 5	98.62%	95.67%
Year 6	99.17%	96.80%

Dates for your diary

Monday 5 th June	School reopens after May half-term holiday
Monday 5 th June	Y6 Hinning House trip – Parents' meeting at 3.30pm
Tuesday 6 th June	Wigan Warriors in school
Tuesday 6 th June	New Starters meeting at 5.30pm
Thursday 8 th June	School closed – General Election
Friday 9 th June	Music Alive performance for whole school
Monday 12 th – Friday 16 th June	LOGOS Art Exhibition at Leigh College
Monday 12 th – Friday 16 th June	Phonics testing week for Y1s
Tuesday 13 th June	Y4 visit to Synagogue
Thursday 15 th June	Y6 Transition day at LHS
Friday 16 th June	Inspire 1
Friday 16 th June	Wear your own clothes day – PTFA Rainbow Tombola donations
Monday 19 th June	Year 6 photographs
Friday 23 rd June	Inspire 2
Saturday 24 th June	PTFA Summer Fair 12-3pm

More information will be available on the school website (www.lowtonprimary.wigan.sch.uk) and in future newsletters regarding school activities.

Headteacher – Mrs A J Davies

Website address:- www.lowtonprimary.wigan.sch.uk