

## Weekly newsletter



Friday 15<sup>th</sup>  
June 2018



### Going for Gold Assembly

Awards for the week ending 8<sup>th</sup> June

#### Pupil of the week:

**Reception** Emilie Simcock  
**Year 2** Aaron Smith  
**Year 4** Sophie Smith  
**Year 6** Mia Walsh

**Year 1**  
**Year 3**  
**Year 5**

Hannah Danson  
Nieve Schoelzel  
Ruth Charnock

#### Playground Awards

**KS1 Indoor** Emilie Simcock  
**KS2 Indoor** Emma Holcroft

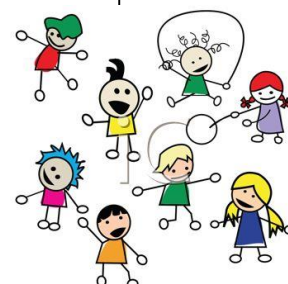
**KS1 Outdoor**  
**KS2 Outdoor**

Lilly Gannon  
Jorja Percival

#### Attendance Award for week ending 8<sup>th</sup> June

Year 1

Well done everyone



### Lowton J & I Times tables Challenge

Well done to everyone below on earning their wristbands. Also a big well done to everyone who tried, keep up the practise.

#### 3s & 4s

Daniella Kay Lewis Williams Ellie Owens  
Ollie Johnson Tia Quigley  
Olivia Cunliffe Cayden Cunliffe

#### 6s & 7s

Kobi'jace Heywood-Harris

#### 8s & 9s

Adam Morton



### Sponsored Bounce

All the children had an excellent time at the PTFA Sponsored Bounce just before half-term. The event raised a magnificent £820 so far for the PTFA funds. We are very lucky at Lowton J and I to have such a supportive and active PTFA. All the funds they raise go towards subsidising school trips, financing projects e.g. new playground equipment, new library books and all those little extras which benefit every child that the school budget cannot afford.

If you have any outstanding sponsor money still at home, please can you arrange to send it in as soon as possible.

**Thank you.**



### KS2 Performance

Tickets for this year's Key Stage 2 Performance will go on sale on Monday 25<sup>th</sup> June. They will cost £2.00 each and are limited to 2 per family. Any unsold tickets will be available to buy from Monday 2<sup>nd</sup> July on a first come first served basis, initial allocation will be a further 2 per family. There will be 2 performances, Wednesday 11<sup>th</sup> July at 2pm and at 6pm. This year's production is "Murder at Magpie Manor".



### Car Parking

This week the office has had to deal with a number of complaints regarding alleged irresponsible and illegal parking around school at drop off and pick up time. Whilst we appreciate the difficulties the lack of parking brings please do try to park considerately and legally at all times. All callers have been advised to contact the police and traffic wardens if they consider illegal and obstructive car parking has taken place. **Thank you for your continued support with this matter.**



### Sunglasses

We have had many children coming to school with sunglasses in the warm weather but quite a few pairs have been lost or broken which has caused lots of upset. Unless your child needs to wear sunglasses for hay fever, please could these be left at home.





### PTFA Summer Fair

This year's "Farm themed" Summer Fair will take place on Saturday 30<sup>th</sup> June from 12-3pm. There'll be stalls, bouncy castle, games, tombola and BBQ. Lots of fun for all, please come along and support our PTFA.



### Advance notice

On Friday 22<sup>nd</sup> June the children are allowed to come to school in their own clothes in exchange for a donation to the tombola which will take place at the PTFA Summer Fair on Saturday 30<sup>th</sup> June. Each class is asked to bring in different coloured donations, please see the PTFA flyer for details. Thank you for your support with this.

### Bikes and Scooters

Please can I remind everyone that bikes and scooters **must not** be ridden on the school grounds. Children (including younger siblings) and adults are very welcome to come to school on these but must dismount at the top of the main path to school and push them to the racks. **Thank you for your support.**



### Contact and Medical Details

We know people change their mobile phones and therefore numbers regularly but it is really important that school is able to contact you in an emergency. Please keep us up to date with all your contact names and numbers. Also if your child is diagnosed with an illness or has a condition you are not sure we are aware of please contact the school office. The safety and health of all our children is of the utmost importance to us.



At Lowton J & I we aim for all children to have 96% attendance or over.

The school's overall attendances for each year group are:

Year Group	Last Week	Yearly Attendance to Date
Reception	97.93%	92.77%
Year 1	99.33%	94.90%
Year 2	97.00%	94.85%
Year 3	98.13%	96.47%
Year 4	94.67%	96.13%
Year 5	99.00%	96.42%
Year 6	90.67%	95.15%

### Dates for your diary

Wednesday 20 <sup>th</sup> June	CSE presentation for parents at 2.45pm
Friday 22 <sup>nd</sup> June	Inspire 2 2.00 – 3.00pm
Friday 22 <sup>nd</sup> June	PTFA Own clothes day – donations for rainbow tombola
Wednesday 27 <sup>th</sup> June	Sports Day – weather dependent
Saturday 30 <sup>th</sup> June	PTFA Summer Fair 12.00-3.00pm
Thursday 5 <sup>th</sup> July	Reception trip to Underwater Street
Friday 6 <sup>th</sup> July	Fishers Mobile Farm in school
Monday 9 <sup>th</sup> July	Y4 recorder performance for parents
Wednesday 11 <sup>th</sup> July	KS2 afternoon performance 2.00pm and evening performance 6.00pm
Tuesday 17 <sup>th</sup> July	Open Morning for report opening in all classes
Tuesday 17 <sup>th</sup> July	Pop Project in school
Wednesday 18 <sup>th</sup> July	Y6 Mountain Monkeys' Day
Wednesday 18 <sup>th</sup> July	Y1 trip to Blackpool Zoo
Thursday 19 <sup>th</sup> July	Award's Assembly 9.00am
Friday 20 <sup>th</sup> July	Leavers' and Y6 awards Assembly 9.00am
Friday 20 <sup>th</sup> July	PTFA End of Year Party for all children 1.00pm
Friday 20 <sup>th</sup> July	School closes for the Summer break



**Headteacher – Mrs A J Davies**

**Website address:- [www.lowtonprimary.wigan.sch.uk](http://www.lowtonprimary.wigan.sch.uk)**