

Weekly newsletter



Friday 13th
December
2019



Going for Gold Assembly

Awards for the week ending 6th December 2019

Pupil of the week:

| | | | |
|------------------|-------------------|---------------|------------------------|
| Reception | Josef Shea | Year 1 | Molly Boydell |
| Year 2 | Kyreece Isherwood | Year 3 | Patrick Nolan-Yildirim |
| Year 4 | Thomas Robinson | Year 5 | Ellie Owens |
| Year 6 | Hannah McMillan | | |

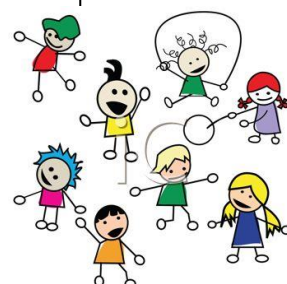
Playground Awards:

| | | | |
|-------------------|---------------|--------------------|----------------|
| KS1 Indoor | Warren Ward | KS1 Outdoor | Molly Walmsley |
| KS2 Indoor | Leyla Simcock | KS2 Outdoor | Lillie Hurst |

Attendance Award for week ending 6th December 2019

Year 3

Well done everyone



School Christmas Lunch

Our school Christmas Lunch is on Monday 16th December and the children can come to school in a Christmas jumper, t-shirt or hat on that day. If you would like your child to have a Christmas Dinner then please can you ensure this is ordered as soon as possible. All the children in Reception, Year 1 and Year 2 are entitled to Universal Free School Meals so you will just need to order as usual for these children.



Pop Project and Food Bank Donations

This morning the Pop Project made their annual Christmas Visit to school to perform their "Christmas Through the Ages" show for all the children and staff. Following the success of last year's appeal we decided that instead of asking parents and carers for a contribution to the cost we would instead ask for a donation to the Food Bank to support those in need over the Christmas period. Thank you for your amazing support and donations to this fantastic charity.



Parents' Open Morning

We are having an Open Morning on **Monday 16th December** between 9.00 - 10.00am. You are very welcome to visit your child's classroom and look at their books and work.



Pupil of the Term Assembly

Everyone is welcome to join us for our Autumn Pupil of the Term Assembly on Thursday 19th December at 9.00am.

At Lowton J & I we aim for all children to have 96% attendance or over.
The school's overall attendances for each year group are:

| Year Group | Last Week | Yearly Attendance to Date |
|------------|-----------|---------------------------|
| Reception | 95.33% | 92.72% |
| Year 1 | 95.00% | 96.67% |
| Year 2 | 96.00% | 96.15% |
| Year 3 | 97.67% | 96.59% |
| Year 4 | 88.39% | 91.86% |
| Year 5 | 90.27% | 94.55% |
| Year 6 | 97.33% | 96.82% |

PTFA Children's Parties

This year our PTFA are holding two Christmas parties for the children. Reception, Y1 and 2's is on **Wednesday 18th December** in the afternoon. Ys3-6 will be having their party on the afternoon of **Thursday 19th December**. All children need to come to school in their uniform and bring their party clothes for changing into in a clearly labelled carrier bag. The children will not need any money. **Thank you.**



Outdoor P.E. Kit

Please can you ensure your child has an outdoor P.E. kit as well as an indoor P.E. kit in school at all times. There are certain activities the children will do outside, over the Winter months if the weather is dry. A pair of tracksuit bottoms, trainers and a long sleeve sweatshirt are suitable. Thank you.



Christmas Cards

If your child is using the School Post Box to post Christmas cards to their friends, please can you make sure that they put their friends full name on together with the year group they are in. **Thank you.**



Education Penalty Notice Warning for Non School Attendance

Lowton J & I are passionate about providing your children with the very best education and it is vitally important to us that each child arrives on time and ready to learn.

The key notes to mention about our policies are that if your child falls within one or more of the following categories within a 12-week period you may receive a penalty notice: -

- 10 sessions (5 days) of unauthorised absence with under 90% attendance
- 20 sessions (10 days) of unauthorised absence
- persistently arrives late to school after the close of registration

We totally understand that you may be late on the odd occasion and it is only if this becomes a regular occurrence that it would become an issue.

Christmas Holidays

School closes at 3.30pm on Thursday 19th December 2019 for the Christmas holidays and re-opens at 8.45am on Tuesday 7th January 2020. Breakfast Club will be open as usual from 8.00am on Tuesday 7th January.

Payments into School

Please can you ensure that all payments for Reception and KS1 snack, Year 5 Swimming lessons and any child who has Music lessons are sent into school each Monday for that week's snack/lesson. We are currently experiencing high levels of arrears and are having to chase parents for payment which is taking a considerable amount of time. Thank you for your continued support.

Christmas Performances

Thank you for your magnificent support at the Christmas Performances this week. It is such a busy time of the year for everyone and it was lovely to see so many of you. Thank you also to our wonderful children and staff for working so hard to learn words and songs and for coming back in the dark, wet evenings. ☺



Year 5 and Year 6 Trips

Please note the deadline for the payment for Y6 Quarry Bank Mill trip is 13th December and Y5 Tatton Park trip is 19th December. If you are unable to make the payment by these dates then please contact the school office. Thank you.



Headteacher – Mrs A J Davies

Website address:- www.lowtonprimary.wigan.sch.uk

Dates for your diary

| | |
|-------------------------------------|--|
| Monday 16 th December | Parents' Open Morning 9.00am – 10.00am |
| Monday 16 th December | Grandparents' Tea Party at 2pm |
| Tuesday 17 th December | Grandparents' Tea Party at 2pm |
| Wednesday 18 th December | PTFA Reception and KS1 Christmas Party at 1.30pm |
| Thursday 19 th December | PTFA KS2 Christmas Party at 1.30pm |
| Thursday 19 th December | School closes for Christmas Holiday |
| Monday 6 th January 2020 | INSET DAY for staff only |
| Tuesday 7 th January | School reopens to pupils after the Christmas break at 8.45am |
| Thursday 9 th January | Y5/6 Parents Puberty Session at 2.15pm |
| Wednesday 15 th January | Provisional Y5 Trip to Tatton Park |
| Thursday 16 th January | Y6 Trip to Quarry Bank Mill |
| Friday 17 th January | Reception Stay and Play 3 – focus on reading |
| Wednesday 22 nd January | Y3 visit to St Mary's Church |
| Thursday 23 rd January | Y6 visit to St Mary's Church |
| Thursday 6 th February | Y4 trip to Tatton Park |
| Friday 14 th February | Parents' Open Morning 9.00 – 10.00am |
| Friday 14 th February | School closes for half term holiday |
| Monday 24 th February | School re-opens after half term holiday |

